



1. 小心的把货物按料架→激光器→冷水机→夹具配件→机台的顺序卸下并安全运送到安装地点。Carefully unload the goods in the order of material rack → laser → chiller → fixture accessories → machine table and transport them safely to the installation site.





2. 下层是料架 A，上层是料架 B。拆下料架的包装，解开固定上层的铁丝，卸掉上层底部固定螺丝。把两层料架分开放到地上。The lower layer is rack A, and the upper layer is rack B. Remove the packaging of the rack, untie the wire that holds the upper layer, and remove the fixing screw at the bottom of the upper layer. Open the two shelves to the ground.

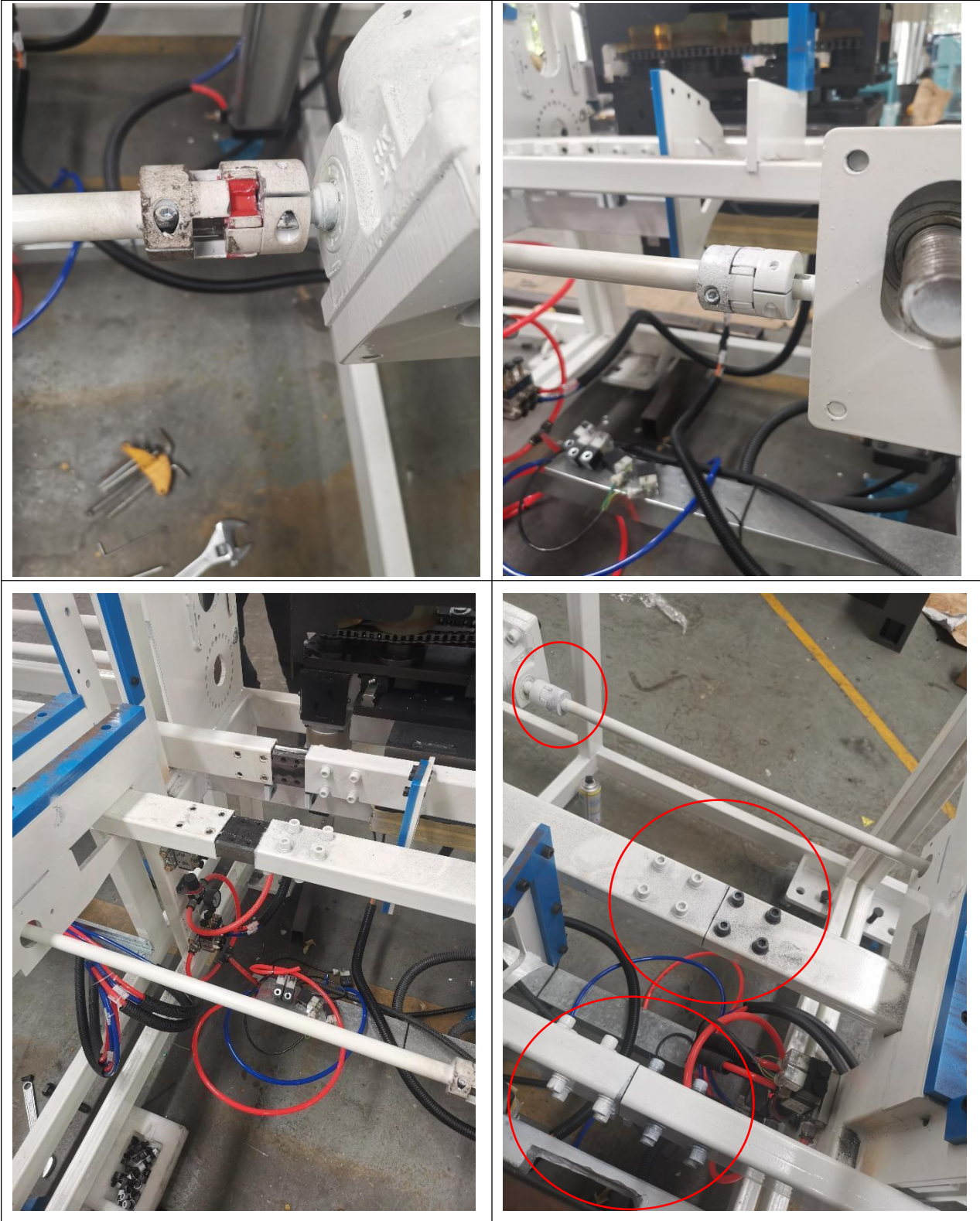


3. 把料架 B 的升降机连接杆的联轴器取下，把升降机连接杆穿过料架 A 后装回，把两个料架连接在一起，对好联轴器和料架位置。Remove the coupling of the elevator connecting rod of material rack B, pass the elevator connecting rod through material rack A and put it back, connect the two material racks together, and align the coupling and material rack positions.

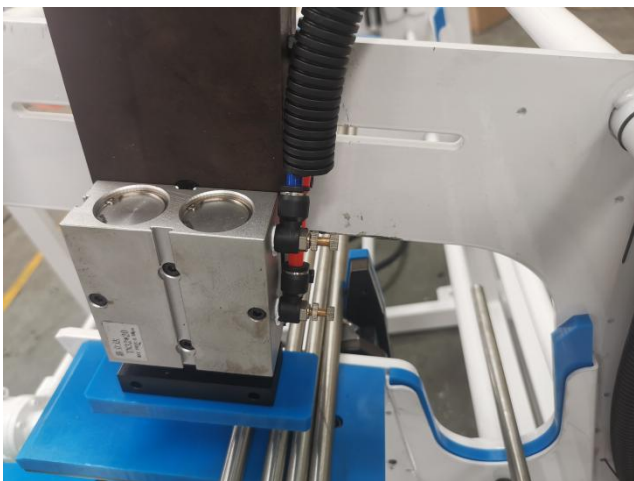
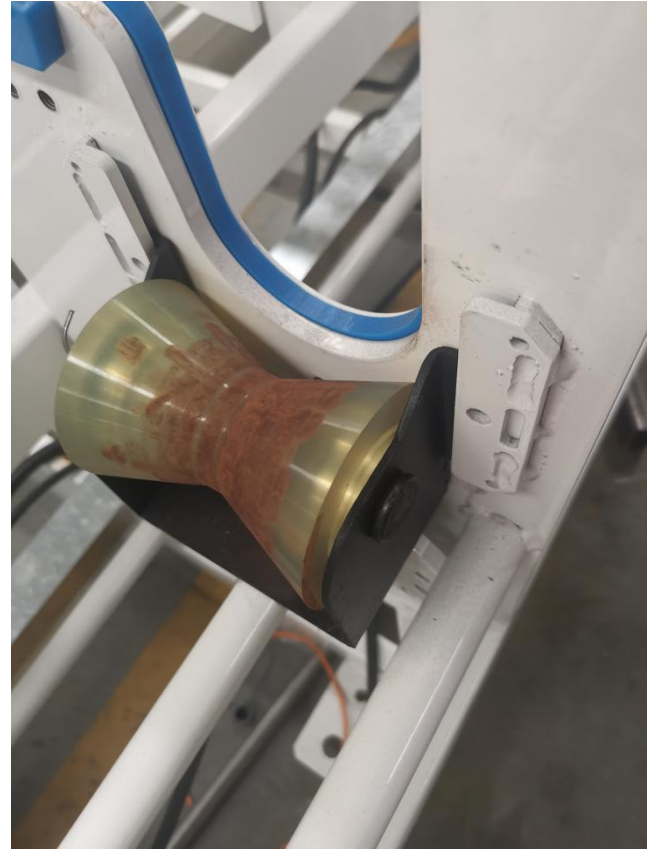




4. 调好料架位置和水平，把连轴器和料架固定螺丝装好。 Adjust the position and level of the material rack, and install the coupling and the fixing screws of the material rack.



5. 把拆下的气缸和滚轮装回原位。 Put the removed cylinder and roller back in place.





6. 按照标记装好对应的气管、电磁阀、编码器线、光电开关。 Install the corresponding air pipes, solenoid valves, encoder wires, and photoelectric switches according to the marks.

